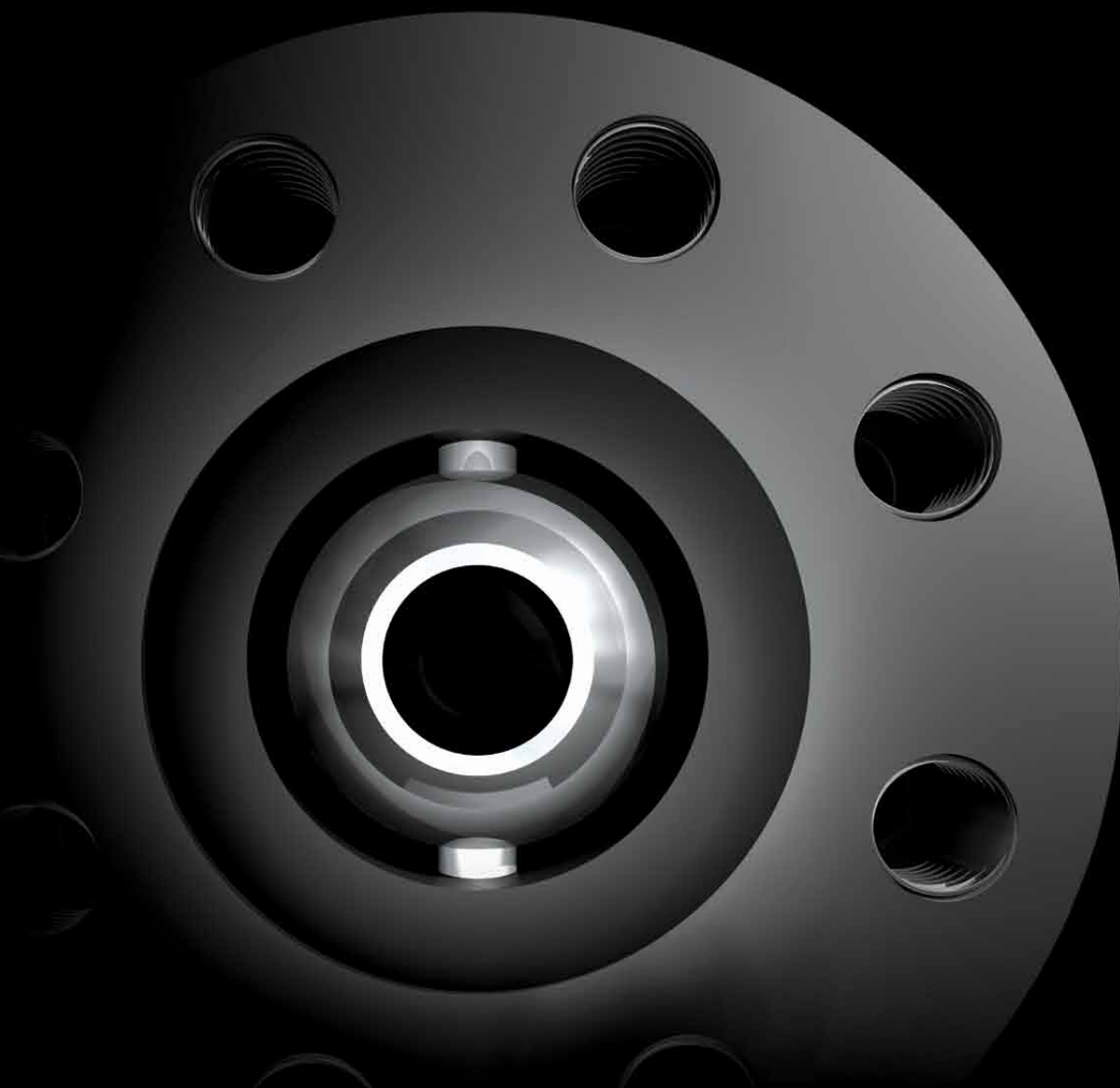
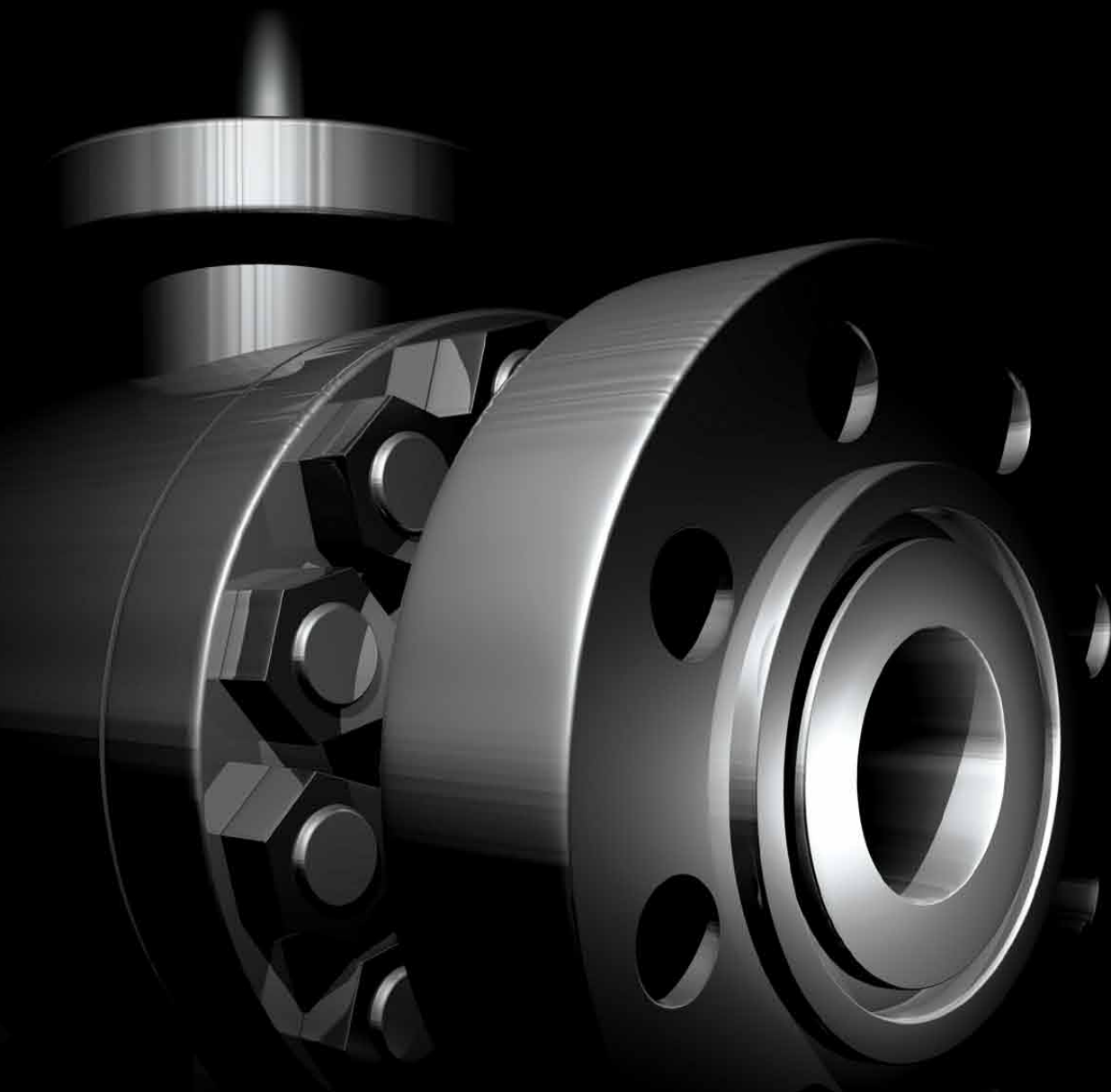




There are ball valves and there are Severn Ball Valves



Isolation valves are more than a commodity. They play a vital role in safety and performance, and that's why Severn Ball Valves takes them so seriously.



You're never alone with our isolation valves

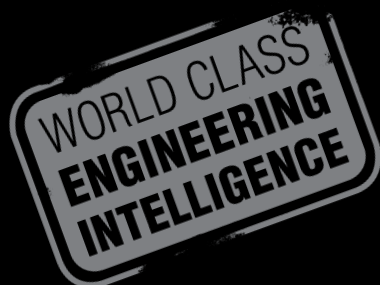
Quality, reliability and technical knowledge are the three pillars of our quarter and multi-turn isolation valve stock and supply business.

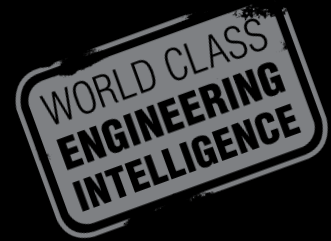
At Severn Ball Valves we have an in-depth understanding of the rigours and demands of processing industries and we insist on the same from our suppliers. In order to meet our exacting selection criteria, all our principle suppliers must have an outstanding reputation for product quality and on-time delivery.

Alignment with sister Severn Glocon Group companies Severn Unival (engineering services) and Severn Glocon (control and choke valve manufacture) gives us an international reach. We work on a global basis with major operators in the oil and gas, petrochemical, LNG and power generation arenas.

Each valve supplied by us comes with a proven design track record and material provenance. We supply from our extensive stockholding in Aberdeen and also direct from our principal manufacturers. We go above and beyond standard quality procedures so our customers can be assured that they are receiving the correct valve for each application.

Contact us today to find out how you can enhance safety and performance with our world-class isolation valves suitable for all major industries.

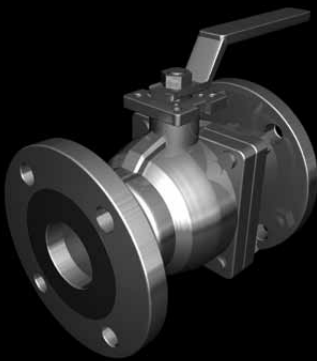




Our valves

As part of the Severn Glocon Group family, Severn Ball Valves' products come with our stamp of **world-class engineering intelligence**. We have the technical expertise to commission the best isolation valve for the job – whatever the industry, whatever the application.

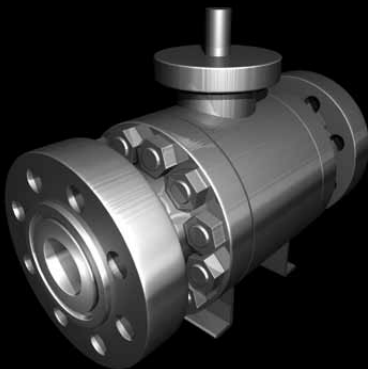
Our highly experienced team of valve engineers has a wide and professional knowledge of the supply network, enabling us to offer very competitive pricing. They personally ensure that every product we supply offers optimum reliability in the application for which it is intended.



Floating Ball Valves

Flanged PN16/40 and ANSI 150, 300, 600 floating ball valves/carbon steel, low temperature carbon steel and stainless steel.

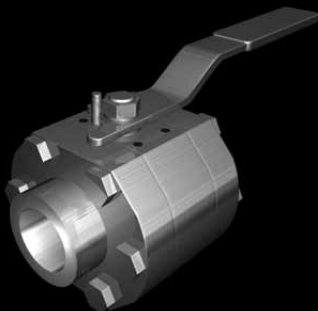
½" to 12" full and reduced bore/soft and metal seats/fire safe/NACE/PED/ATEX/3.1b (3.1c available).



Trunnion-Mounted Ball Valves

Flanged, weld and hub-ended ANSI 150-2500 API 5000/10000/trunnion-mounted. Carbon steel, low temperature carbon steel, alloy steels, stainless steel, duplex and exotic alloys/soft and metal seats, soft seated.

½" to 36" full and reduced bore/fire safe/NACE/PED/ATEX/3.1b (3.1c available).



Three-Piece Ball Valves

Class 150 to 2500 three-piece ball valves with flanged, screwed and weld ends. Carbon steel, low temperature carbon steel, alloy steels, stainless steel, duplex and exotic alloys/soft and metal seats.

½" to 4" full and reduced bore/soft seats/fire safe/NACE/PED/ATEX 3.1b (3.1c available).



Gate Globe and Check Valves

Forged steel gate, globe and check valves/Class 800/1500, ANSI 150 to 2500/carbon steel, low temperature carbon steel, alloy steels (F5, F11 and F22 etc.), stainless steel.

1/2" to 2" full and reduced bore/flanged, screwed and weld ends. Bolted and welded bonnets/NACE/3.1b/PED.

Cast steel gate, globe, and check valves including SDNR, ANSI 150 to 2500/carbon steel, low temperature carbon steel, alloy steels (F5, F11 and F22 etc.), stainless steel/full and reduced bore/flanged, hub-ended and weld ends. Bolted and welded bonnets/NACE/3.1b / 3.1c/PED.

2" to 48" full and reduced bore/flanged, screwed and weld ends. Bolted and welded bonnets/NACE/3.1b/PED.



Butterfly Valves

Double and triple offset butterfly valves ANSI 150/1500 up to 36".

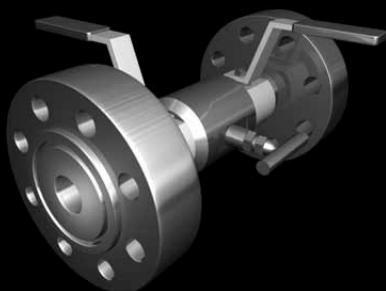
Carbon steel, stainless steel and aluminium bronze/wafer and lugged pattern, double flanged also available. We offer soft and metal seated. NACE/fire safe/PED/ATEX/3.1b.

Resilient seated butterfly valves/PN10 and 16/cast iron, steel, aluminium bronze/EPDM, Viton and nitrile liners. Wafer and lugged pattern available.



Wafer Check Valves

Wafer pattern dual plate check valves, wafer and lugged pattern (flanged and hub-ended available). ANSI 150-2500 and PN6-16 up to 48" cast iron, low temperature carbon steel, stainless steel and aluminium bronze. Soft and metal seated/NACE/PED/ATEX/3.1b/fire safe available.



Instrumentation and Double Block & Bleed Valves

We offer pipeline and instrumentation DBBs, flanged, low temperature carbon steel, stainless steel and exotic alloys. Flanged, screwed, hub and quill ends. ANSI 150 to 2500. Full and reduced bore/fire safe/NACE/PED/ATEX/3.1b.

Our services

In-house testing and quality assurance is offered as standard on our quarter and multi-turn isolation valves. All tests are conducted under one roof, so you can witness testing and sign-off paperwork in a single visit. And qualified on-site engineers are always available to meet any pre-dispatch needs.

Valves can be coated or painted as necessary and packaging can be lightweight or robust depending on storage and transportation.

Our internal documentation department is able to create bespoke packages in line with customer requirements. We offer a wide range of tailored services, including certification, documentation, expediting and third-party inspection.

Services

Actuation

Function testing

Pressure testing

Low temperature testing

High temperature testing

Hydrostatic and gas testing

Fire testing

FAT (Factory Acceptance Testing) of actuator and control packages

PMI (Positive Material Identification) testing

Machining and modification

Industry standards

BS21/BS EN 12266-1:2003 / BS EN122266-2 2002 /BS1873 /BS1868 /BS EN ISO 172:2004

ANSI B16.34 / ANSI B16.10/ BS EN ISO 15761:2006/B16.25/BS EN ISO 10434:2004

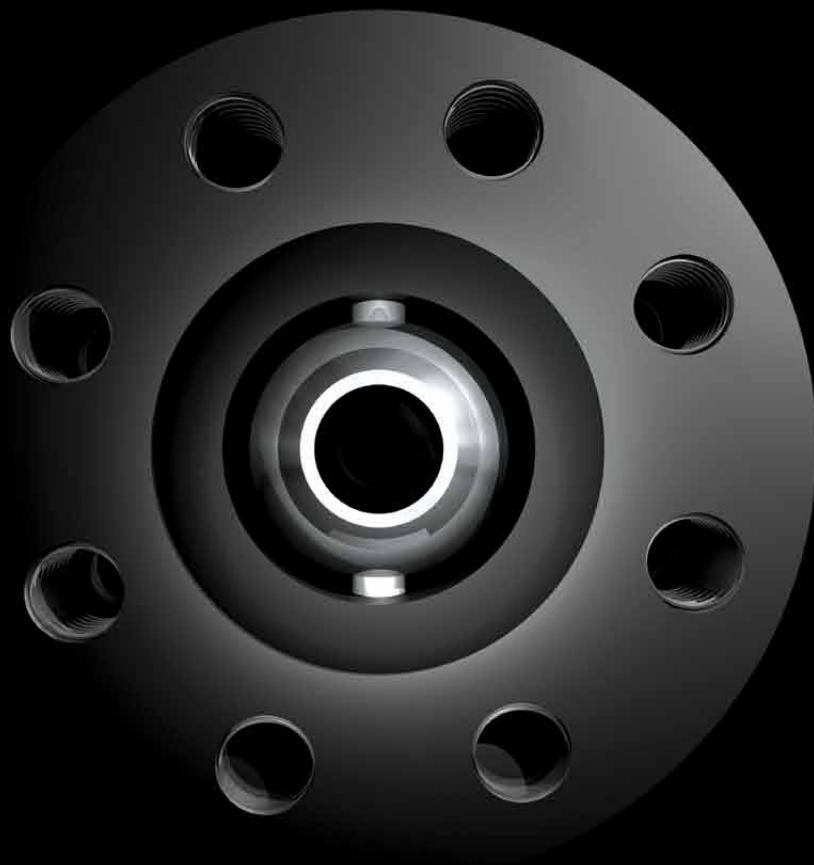
ANSI B1.20.1 /ANSI B16.11 / BS EN 12627; 1999/ API 6D / API 607 /API 6A /BS EN 588-1:1996

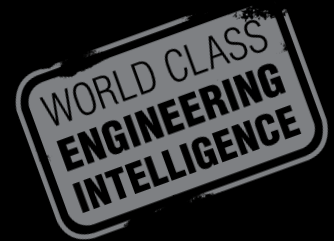
API 594 / API 602 /BS EN 588-2:1996/API 600/ API 598/NACE MR01-75 latest editions

PED 97/23/EC

ATEX Directive 97/23/EC

Fire Testing to BS 6755, latest specifications





Sales

T. + 44 (0) 1224 780 036 F. + 44 (0) 1224 780 387
sales@severnballvalves.co.uk www.severnballvalves.com

Severn Ball Valves

Unit E Badentoy Avenue Badentoy Park Portlethen Aberdeen Scotland AB12 4YB



SAFETY | PERFORMANCE | RELIABILITY

Alignment with Group sister companies Severn Unival (engineering services) and Severn Glocon (control and choke valve manufacturer) underpins our world-class engineering intelligence status. Find out more about the Group offering at www.severnglocon.com.

